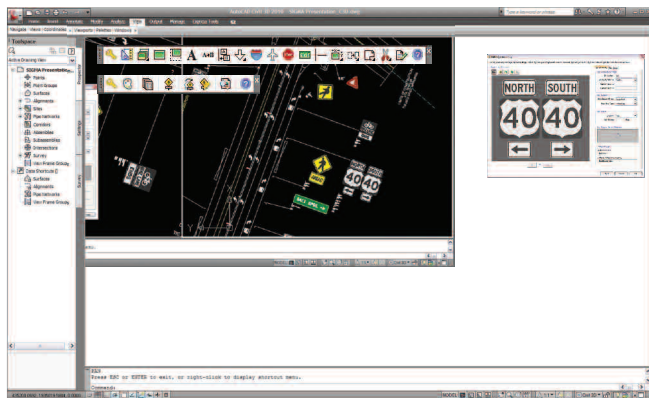




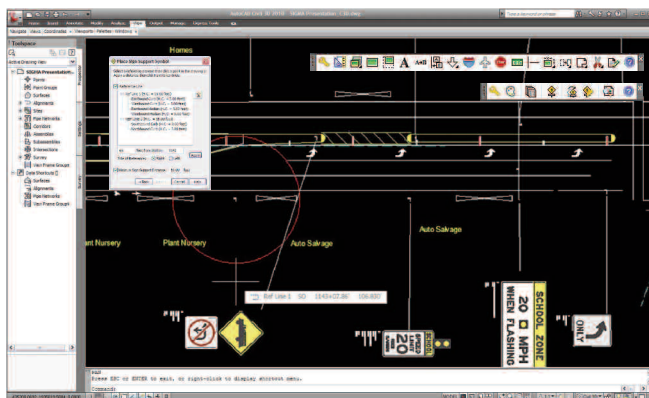
SIGMA gives you the ability to create sign assemblies using high quality CAD content from complete libraries of federal and regional standard signs, as well as user generated content. Newly designed assemblies can be precisely placed in a roadway corridor drawing in relation to other geometric elements while maintaining pre set distances from set points, such as the edge of pavement.



» Add newly created sign assemblies within your traffic signing plan drawing.

» PRECISELY PLACE SIGN ASSEMBLIES

Sign assemblies can be precisely placed and reported in relation to stationing alignments (vertical CAD products) or simple roadway control lines as polylines and complex chains (basic CAD products). In addition, offset reference geometry representing edge of pavement can be defined with a horizontal clearance to ensure minimum clearance distances between the roadway and sign fixtures.



» Defining reference lines lets you specify and report on assembly placement.

» DESIGN SIGN ASSEMBLIES EASILY

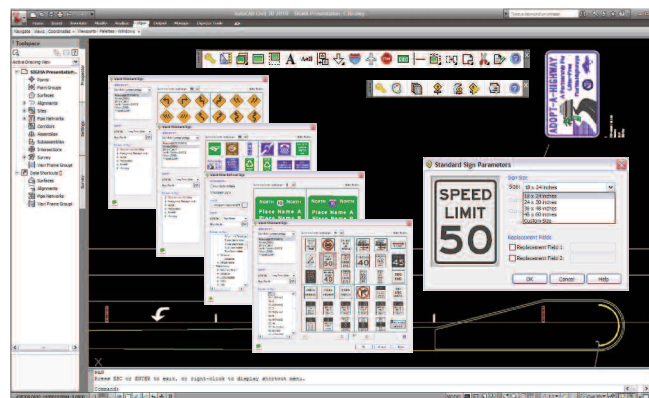
Simple to complex sign assemblies can be created to account for sign facing(s), mounting types, mounting options, and assembly status (i.e. existing, proposed, and remove/relocate). Sign facings can be created from typical sign arrangement templates or dynamically generated by adding, positioning, and spacing required signs.

» INCREASE DESIGN PRODUCTIVITY

With SIGMA you can increase design productivity by copying previously placed sign assemblies to a new location along the roadway. Copied assemblies are automatically assigned a new unique ID number and can be edited to change status, mounting, sign facings, and rotation.

» WORK WITH SIGN LIBRARIES

SIGMA is supported by high quality CAD libraries viewable in color, black and white filled, or outline for federal and regional standard signs. Libraries contain searchable indexes for all signs including sign name, reference codes, sizing, classifications, and descriptions. SIGMA is also extendable to support libraries of custom drafted blocks/cells and guide panels created using GuidSIGN®.



» Find required signs for assembly creation by searching for specific criteria.

Get the latest in control and visualization



» ADVANCED SIGN ASSEMBLY DESIGN

- Create single and multi-sign assemblies with desired sign support type
- Build sign assemblies using templates of common assembly arrangements
- Use ground mounted sign support types including breakaway and non-breakaway single, double, and triple posts
- Use overhead mounted sign support types including span, cantilever, butterfly cantilever and structure
- Add and rotate different sign groups to create assemblies with multiple sign facings
- Capability to switch signs in a placed sign group
- Dynamically change sign positions within a sign group

» DYNAMIC SIGN ASSEMBLY PLACEMENT

- Place completed sign assemblies freely in the drawing
- Place completed sign assemblies precisely using base CAD geometry or vertical CAD stationing alignments
- Specify offset reference geometry for defined reference lines to represent edge of pavement, median, or shoulder

» COPYING AND EDITING FEATURES

- Ability to select and repeatedly copy a previously placed sign assembly
- Dynamically indicate placement positions for copied sign assemblies
- Set the status (replace, existing, proposed, remove, or relocate) of an existing sign assembly
- Change positions of placed sign assemblies from one reference line to another
- Ability to input horizontal clearance dimensions for sign assemblies
- Add, delete, or change signs and sign groups in an assembly

» SIGN LIBRARIES FEATURES

- Work with complete high quality CAD libraries of federal, state, and regional MUTCD signs for the US, Canada, and Australia (sold separately)
- Work with supported user-defined GuidSIGNS® or CAD drafted cell/block libraries

» INNOVATIVE DISPLAY FEATURES

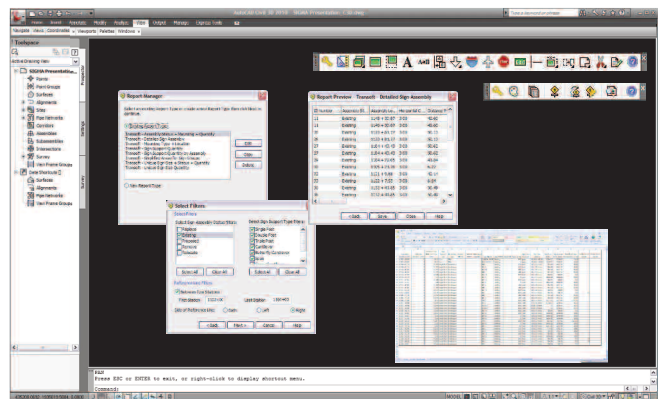
- Ability to change the display mode of signs between outline, black and white filled, and color filled
- Set layer which sign assemblies display in the drawing plan based on status
- Select desired hints to display while SIGMA is operating

» COMPREHENSIVE REPORTING FEATURES

- Generate reports on various information for sign assemblies by selecting them either manually or based on their relationship to reference elements
- Ability to add, delete, and move report display columns
- Filter and sort reports by sign assembly status
- Filter and sort reports by sign assembly mounting type
- View sign assembly reports between two stations on one or both sides of a roadway
- Preview sample reports in a dialog data grid
- Save reports in a CSV format supported by popular spreadsheet applications

» COMPATIBILITY

- AutoCAD® 2007 - 2010 series of products (except AutoCAD LT based products)
- AutoCAD® Civil 3D® 2008 - 2010
- MicroStation® and GEOPAK® V8 XM, V8i
- Full support for 32 and 64-bit operating systems
- System Requirements:
Workstation: Windows® XP, Vista, Windows® 7
Network: Windows® Server 2000, 2003



» Customize the look of assembly reports by adding, deleting, or moving display columns.

» SIGNING PLAN REPORT MANAGEMENT

SIGMA's flexible reporting allows you to create and filter reports based on different parameters such as sign assembly status and mounting type. You can also report on assemblies between a distance/station range on one or both sides of the roadway. Reports can be saved in a CSV format and used with popular spreadsheet applications.