

**MORE SIGNS. LESS TIME.**

**6<sup>2</sup>**

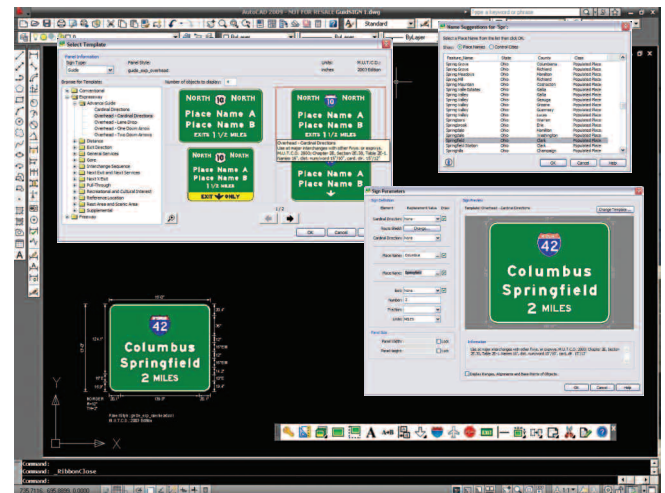


**NOW WITH  
MUTCD 2009  
STANDARDS**

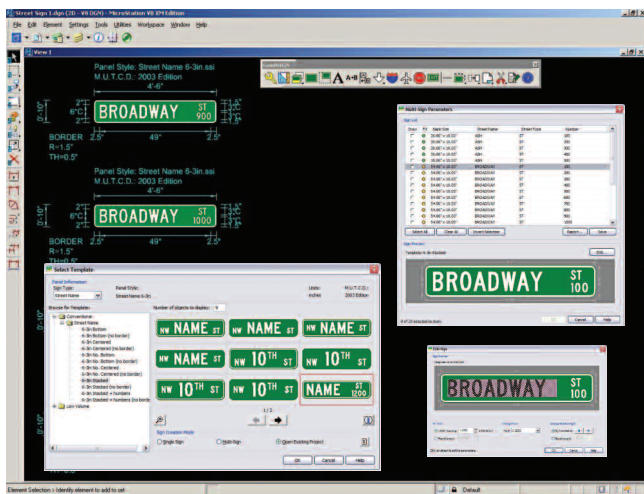
**GuideSIGN** is a powerful CAD-based software that automates the process of designing highway and roadway signs. Traffic engineers know using GuideSIGN's host of productivity-enhancing features, including the latest MUTCD symbols/panels and FHWA highway fonts libraries, intelligent object dimensioning, and innovative sign template creation tool, **signs are designed to standard and ready for cutting in a matter of minutes!**

**» KEEP DESIGN CONSISTENCY**

Browse through a graphical library of MUTCD or custom guide sign templates based on road classification and sign designation to choose the appropriate template. Simply replace the panel content by entering your information or use the **Name Lookup** ability to select destinations from included lists of AASHTO Control Cities or USGS Place Names (by state, county, and feature). Using standard templates ensures a repeatable, consistent, and timesaving process for sign design projects that meet standards.



» Increase productivity and design consistency through the use of standardized MUTCD or custom templates.



**» INNOVATIVE STREET SIGN CREATION**

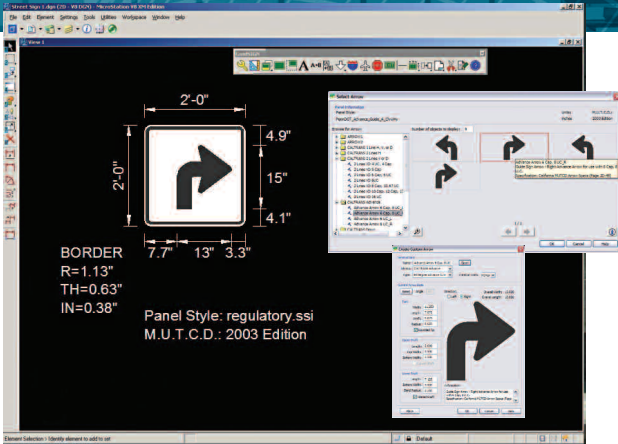
Create single or multiple street signs by selecting the appropriate template from a graphical library of MUTCD or custom street sign templates. The multi-sign project interface allows you to enter a list of street names, street types, and block numbers to build numerous signs with a click of the mouse. In addition, visual indicators notify of spacing conflicts that can be corrected by adjusting the blank size, reducing letter spacing, or changing the font series to fit.

» Intelligent workspace allows you to use templates for the design, management, and reporting of multiple street signs in an efficient process.

# GET IN THE FAST LANE OF PRODUCTIVITY

## ADVANCED STANDARDS CUSTOMIZATION

» GuideSIGN contains built-in libraries of federal MUTCD panel styles (guide, street, and exit) and templates suitable for projects requiring an adherence to national standards. For areas that use their own regional standards, GuideSIGN has the flexibility to easily create new panel styles that specify the rules for object sizing and placement. New templates can be designed from any completed guide or street sign.



» Broaden your design abilities using GuideSIGN with the creation of custom panel rules and templates that meet regional requirements.

## ENHANCED CONTENT CUSTOMIZATION

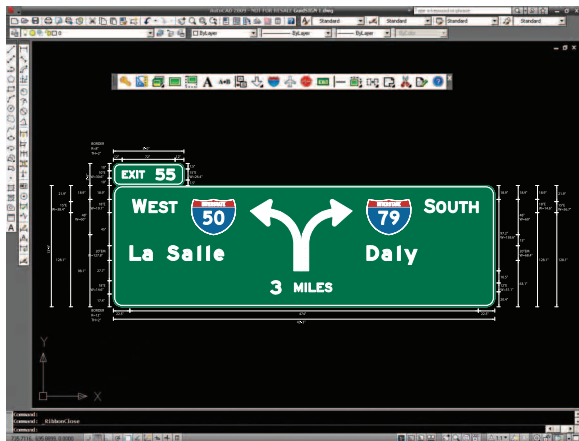
» The **Create Custom Arrow** tool simplifies the process of extending your arrow libraries to meet state specifications. The **Create Sign Library** tool allows you to build custom guide sign libraries for placement in traffic signing plans. Additionally, custom CAD content such as symbols, logos, route markers, arrows, and shields can be imported into your libraries.



» User-created content (i.e. arrows, symbols, route markers, exit panels) can be saved and added to libraries for repeated use.

## WYDIWYG

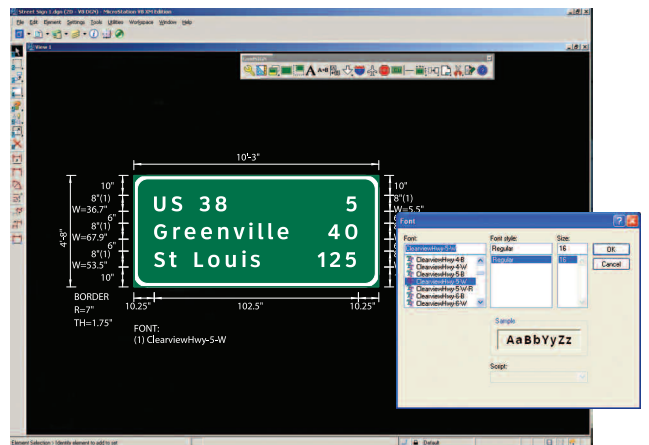
» **What You Design Is What You Get.** GuideSIGN shortens the sign design process with drag and drop object placement, standard tables, and automatic panel dimensioning. Just select a panel style and then add text, route markers, arrows, or other sign objects. Based on the panel style rules, GuideSIGN places the correct highway font and letter spacing, calculates border width and corner radii, and ensures every object conforms to regional specifications.



» From desktop to finished signs in half the time – GuideSIGN dynamically updates panels and objects with the correct dimensional requirements.

## LINKING SIGN DESIGN TO SIGN CUTTING

» Bridge the gap between your output files and software for sign fabrication. With GuideSIGN's **Export Sign for Cutter** feature, choose which objects to cut with the option to reduce space between the objects to minimize material waste. GuideSIGN produces vector-based polyline DFX files that can be read by industry standard sign cutting applications (i.e. FlexiSIGN, Gerber OMEGA, SignLAB etc).



» Complex signs can be designed in a matter of minutes, not hours. Finished signs can then be sent to sign manufacturers for production.

# SIGNS DONE FAST AND EASY.



GUIDESIGN™



## » QUICK SIGN DESIGN FEATURES

- Create guide signs by using a graphic library of custom or supplied templates based on national standards
- Design street signs using a graphic library of custom or included templates based on national standards
- Multiple street signs can be generated from a selected template and added list of names and block numbers

## » CUSTOMIZATION FEATURES

- Create custom panel styles or custom templates to meet state specific standards for sign design
- Design custom arrows by using a set of user-defined dimensions and save them into a library
- Build a custom library of completed signs that can be used in planning and detailed drawings
- Multiple custom libraries (i.e. symbols, exit panels, arrows, etc) supported with GuideSIGN placement tools

## » EFFICIENT DESIGNING CAPABILITIES

- Dynamic sign panels that re-dimension automatically when text, symbols, or objects are added to keep within standard specifications
- Drag and drop object placement from graphical libraries conforming to panel style rules for object spacing
- Options to show dimensions for border inserts, text string lengths, spacing, panel size, font size, and more
- Display and save multiple signs in one file
- Align string components horizontally in reference to other strings within the panel.
- Use logical object snap and movement capabilities
- Display signs as outline, single, or full-colored fills
- Place horizontal and vertical dividers and short lines within the panel.
- Update and edit previously placed panels and text
- Match destination, place, or street names against custom or standard lists of geographic features

## » EXPORT SIGN FOR CUTTER

- Manually or automatically select objects to cut and format their output in a DFX file that can be imported into industry standard sign cutting applications (i.e. FlexiSIGN, Gerber OMEGA, SignLAB, etc)
- Exported objects can be separated into color dependant files for cutting
- Output files can be formatted to fit in a specified material width

## » EXTENSIVE SIGN AND FONT LIBRARIES

- National standard MUTCD highway signs from the US, California, Canada, and Australia
- Panel styles include guide (conventional, expressway, and freeway), construction, regulatory, street name, and warning
- Panel styles for destination, distance, reference location, advance, general services, gore, interchange, etc.
- Exit panel types include floating, bottom center, bottom right, tab, left exit
- Federal and regional route markers and shields
- Arrows include directional, diagrammatic, and turn styles
- Symbols include recreational/cultural interest, and motorist services
- Standard FHWA highway fonts include B, C, D, E, EM, accents and special characters with regional spacing table requirements
- Compatible with any True Type font including Clearview

## » REPORTING FEATURES

- Standard or regional specific drawing sheets can be placed around one or more signs
- Standard or regional fabrication reports and dimension options can be placed around one or more signs
- Sign data can be exported to common text documents

## » TECHNOLOGY ENHANCEMENT

- Customizable layers and levels for improved standardization
- Resizable dialog boxes with thumbnail image preview of objects (i.e. signs, symbols, shields)
- Comprehensive on-line help system and interactive software tutorials
- Checkout GuideSIGN network seats to laptops for field work or client presentations

## » COMPATIBILITY

- Autodesk® AutoCAD® 2010 – 2017 (except AutoCAD LT)
- Autodesk® AutoCAD® Civil 3D® 2010 – 2017 alignments
- Bentley® MicroStation® V8i
- Bentley® PowerDraft (V8i), PowerCivil (V8i)
- Bentley® Power GEOPAK (V8i), Power InRoads (V8i)
- Bricsys® BricsCAD® (Pro and Platinum) V15 – V16
- **System requirements:**  
Full support for 32 and 64-bit operating systems  
Workstation: Windows® 7, Windows® 8/8.1, Windows® 10  
Network: Windows® Server 2008, 2012

For more information on GuideSIGN visit our website at [www.transoftsolutions.com](http://www.transoftsolutions.com)

## TRUSTED BY MAJOR TRANSPORTATION DEPARTMENTS...

"GuideSIGN dramatically cuts man-hours from hand drafting sign layouts. Having more than one sign per file is useful when you need to change something."

**Wyoming D.O.T, USA**

"Excellent program compared with any other sign program. GuideSIGN helps traffic engineers design major guide signs, destination signs and any other signs that meet MUTCD criteria. A very powerful and beneficial tool for traffic engineers."

**Florida D.O.T, USA**

"The use of GuideSIGN has greatly reduced the time needed for developing the large sign layout sheets for our roadway plans."

**HNTB, USA**

"The improved text feature of GuideSIGN greatly reduces time spent producing sign designs. The ability to go from color to black and white saves a lot of time when going from schematic design to final design."

**Carter and Burgess, USA**



## THE BENEFITS OF GUIDESIGN

### SAVE TIME. SAVE MONEY.

There's no need to invest in extra software and hardware to transfer finished sign data to cutter and plotters. GuideSIGN's Export Sign for Cutter feature links sign designs to sign cutting.

### REDUCE DESIGN TIME

Drag and drop object placement, automatic panel dimensioning, inclusive panel and object libraries all make your job easier while maintaining set standards. Just pick a panel, add text and symbols, drag them into place and you're done!

### MAXIMIZE PRODUCTIVITY

GuideSIGN comes complete with the sign panels, standard symbols, and highway fonts you need and takes care of the details such as letter spacing, border widths, and object scaling. This means you'll be done in a fraction of the time!

### DESIGN WITH CONSISTENCY

With GuideSIGN's built-in federal/regional standards and innovative sign template creation system, you can create any number of guide and street signs that conform to specification requirements.

## HOW TO CONTACT US

### NORTH AMERICA - HEAD OFFICE

1.888.244.8387 (Toll Free US and Canada only)

Telephone 1.604.244.8387

Fax 1.604.244.1770

[info@transoftsolutions.com](mailto:info@transoftsolutions.com)

### EUROPE | MIDDLE EAST | AFRICA

#### NETHERLANDS OFFICE

Telephone +31 10 258 78 78

Fax +31 10 258 78 77

[infoEU@transoftsolutions.com](mailto:infoEU@transoftsolutions.com)

### AUSTRALIA | NEW ZEALAND | ASIA

1.800.107.106 (Toll Free Australia only)

Telephone +61 2 9387 7115

Fax +61 2 8905 9574

[infoAUS@transoftsolutions.com](mailto:infoAUS@transoftsolutions.com)

0800 449 662 (New Zealand only)

[infoNZ@transoftsolutions.com](mailto:infoNZ@transoftsolutions.com)

### LATIN AMERICA

Telephone 1.604.244.3824

Fax 1.604.244.1770

[infoINT@transoftsolutions.com](mailto:infoINT@transoftsolutions.com)

To download our product demos or to find out more information about our products, please visit our website at [www.transoftsolutions.com](http://www.transoftsolutions.com)

Please note that some products are only available in specific regions and languages.